

Gemeinde Reiden, Gemeindeverwaltung

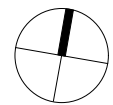
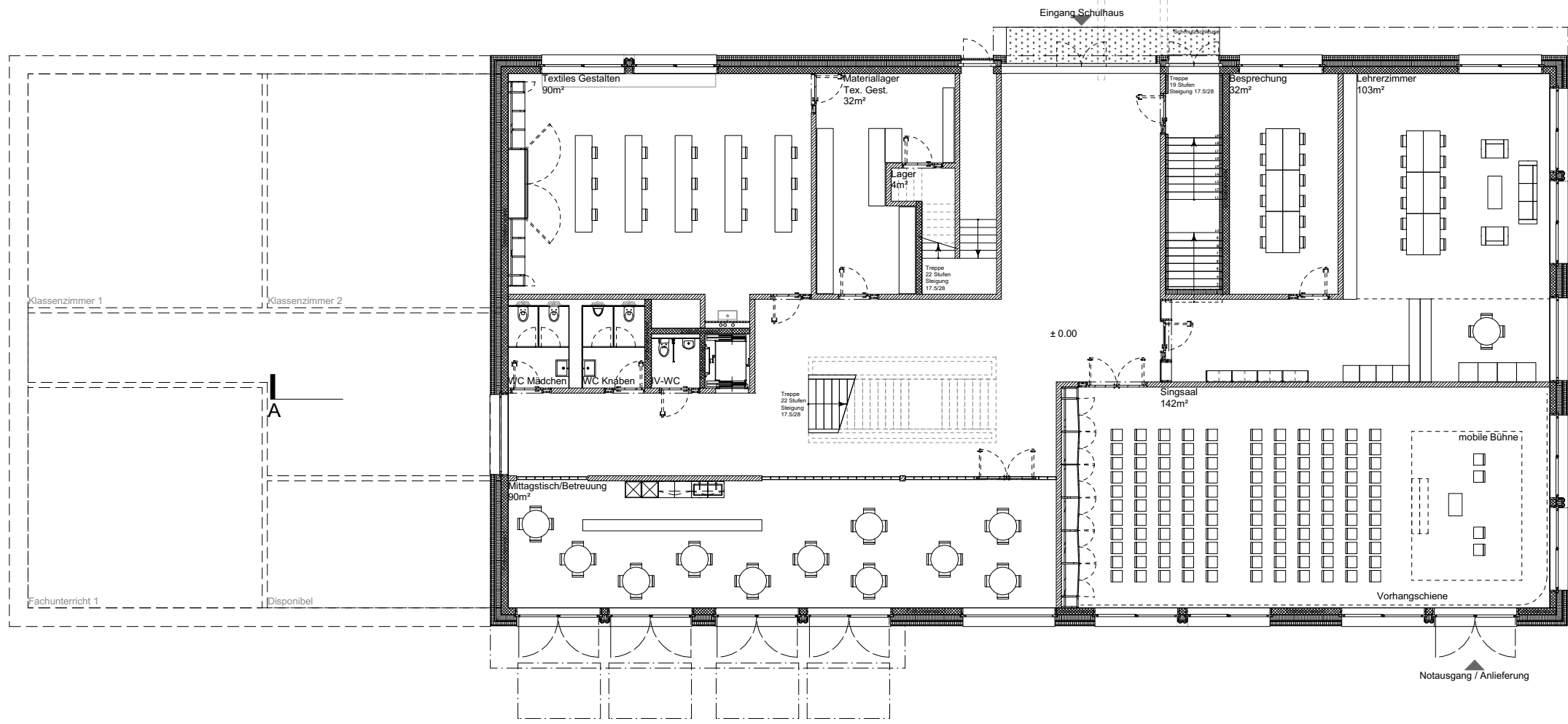
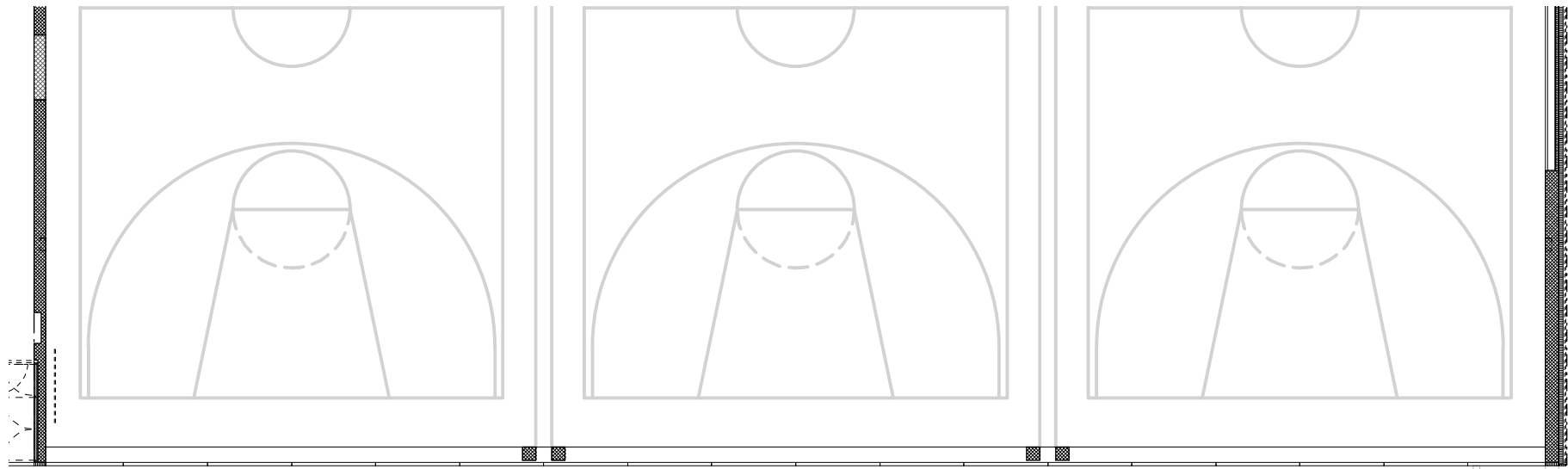
Grossmatte 1, 6260 Reiden
Tel. 062 749 00 60 Fax

Masstab
1:200
Grosse
A3

Gez.
mm
Datum
04.04.18

Objekt Nr.
649
Plan Nr.
P 100

Neubau Schulhaus Reiden Mitte
Projekt
Grundriss Untergeschoss -1_Minimal



Gemeinde Reiden, Gemeindeverwaltung

Grossmatte 1, 6260 Reiden
Tel. 062 749 00 60 Fax

Massstab
1:200

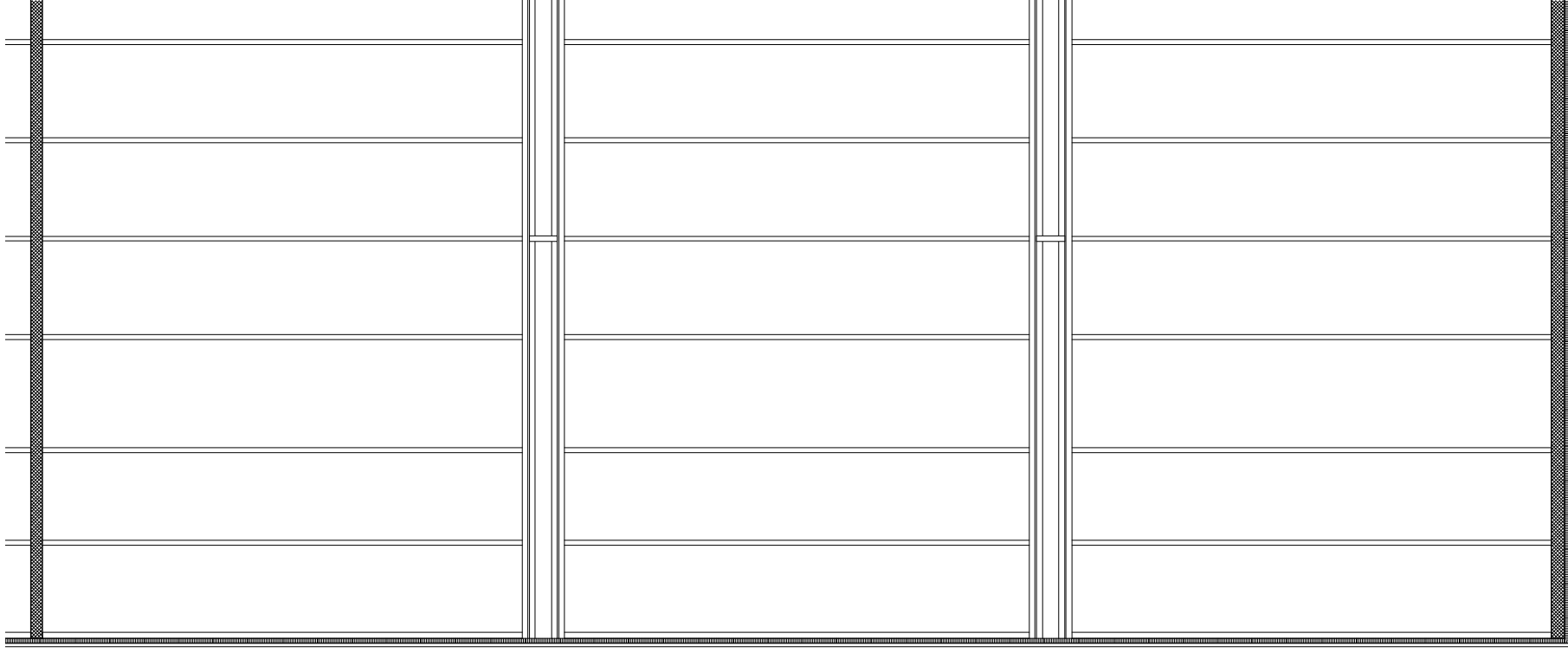
Groesse
A3

Gez.
mm
Datum
04.04.18

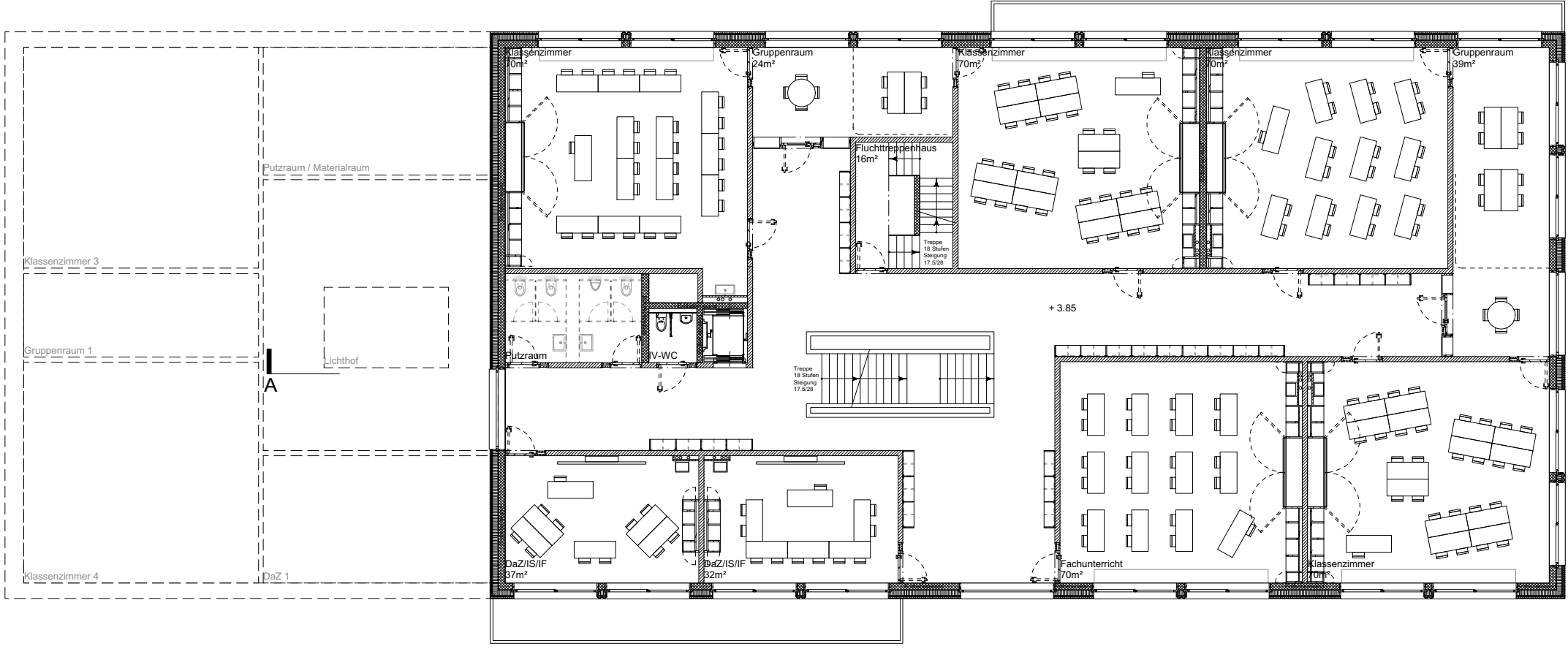
Objekt Nr.
649
Plan Nr.
P 101

Neubau Schulhaus Reiden Mitte
Projekt

Grundriss Erdgeschoss

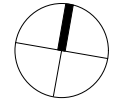


B



B

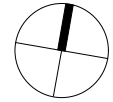
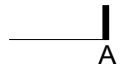
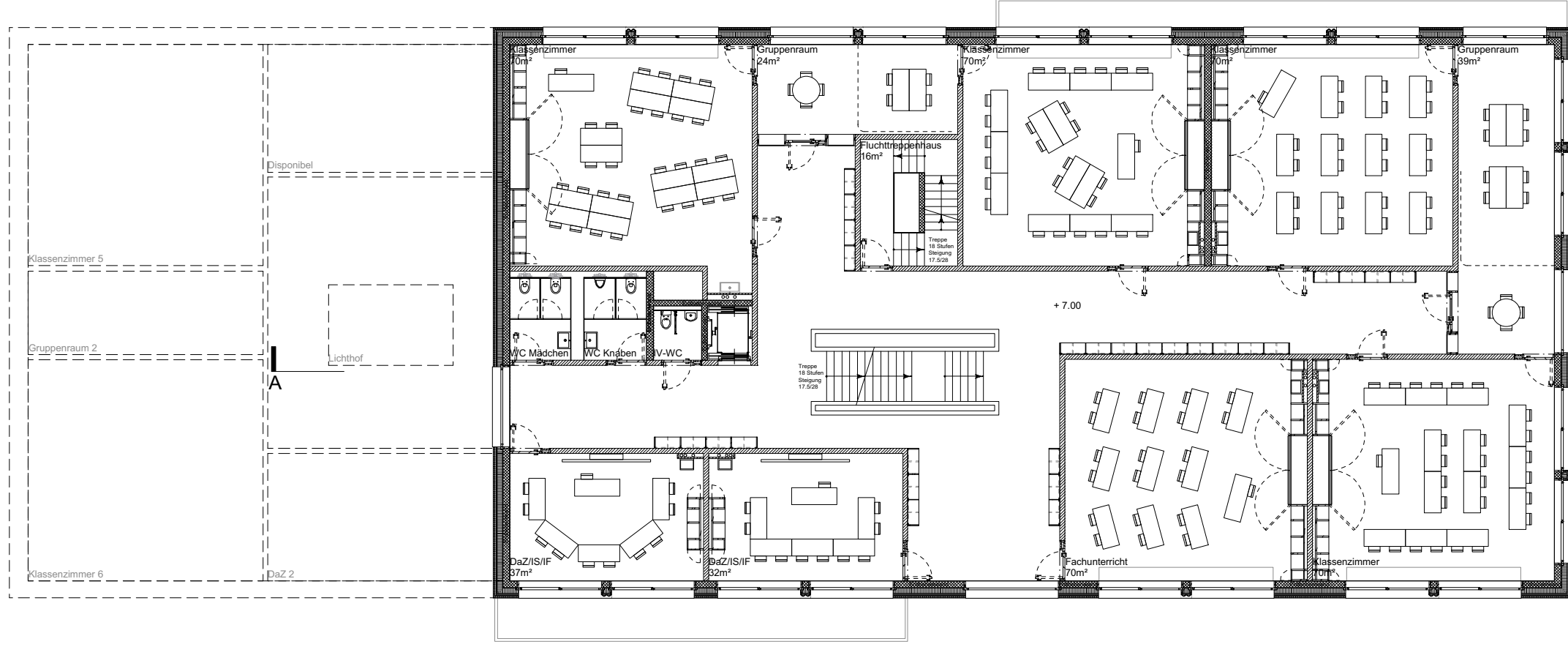
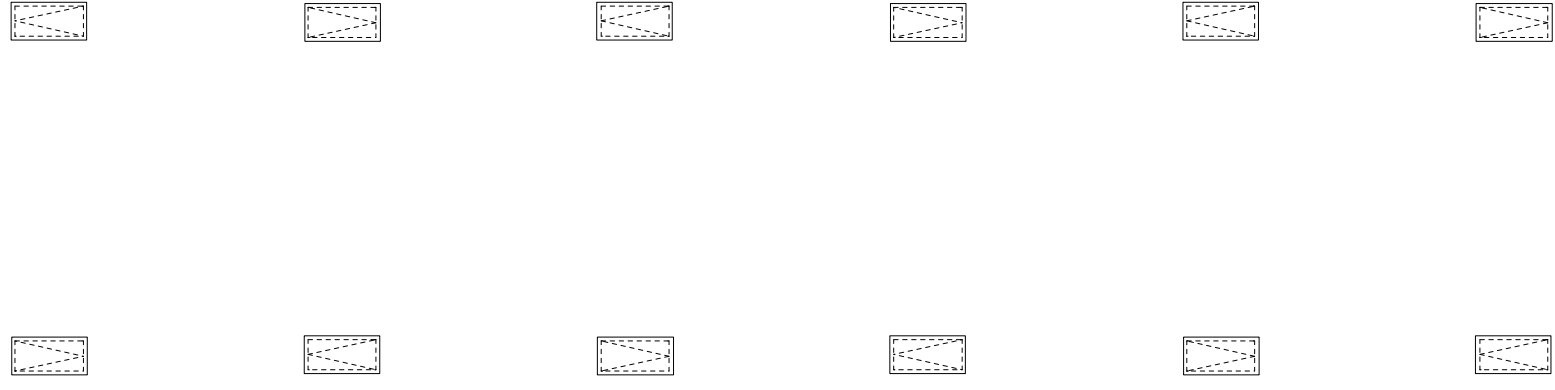
A



Gemeinde Reiden, Gemeindeverwaltung
 Grossmatte 1, 6260 Reiden
 Tel. 062 749 00 60 Fax

Objekt Nr. 649
 Plan Nr. P 102
 Gez. mm Datum 04.04.18
 Massstab 1:200
 Grosse A3

Neubau Schulhaus Reiden Mitte
Projekt
Grundriss Obergeschoss +1



Gemeinde Reiden, Gemeindeverwaltung

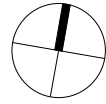
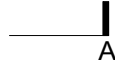
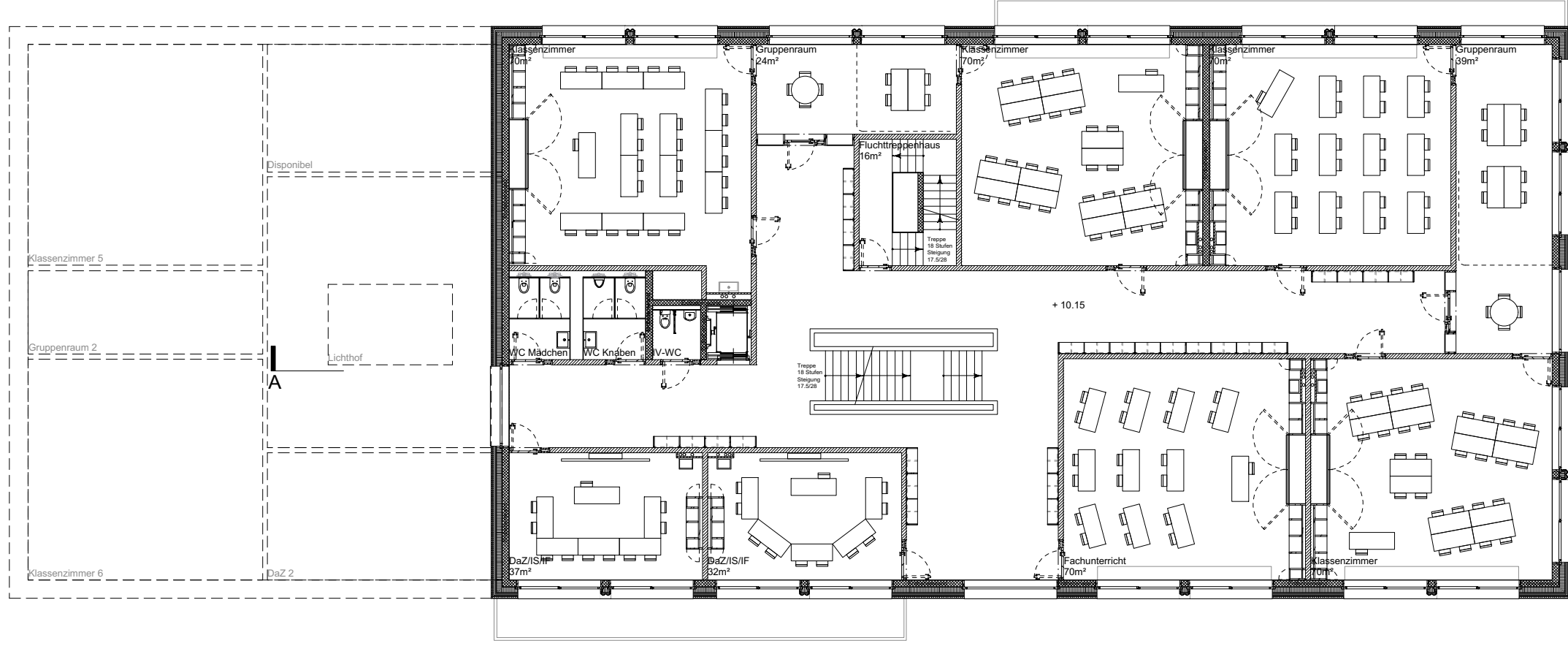
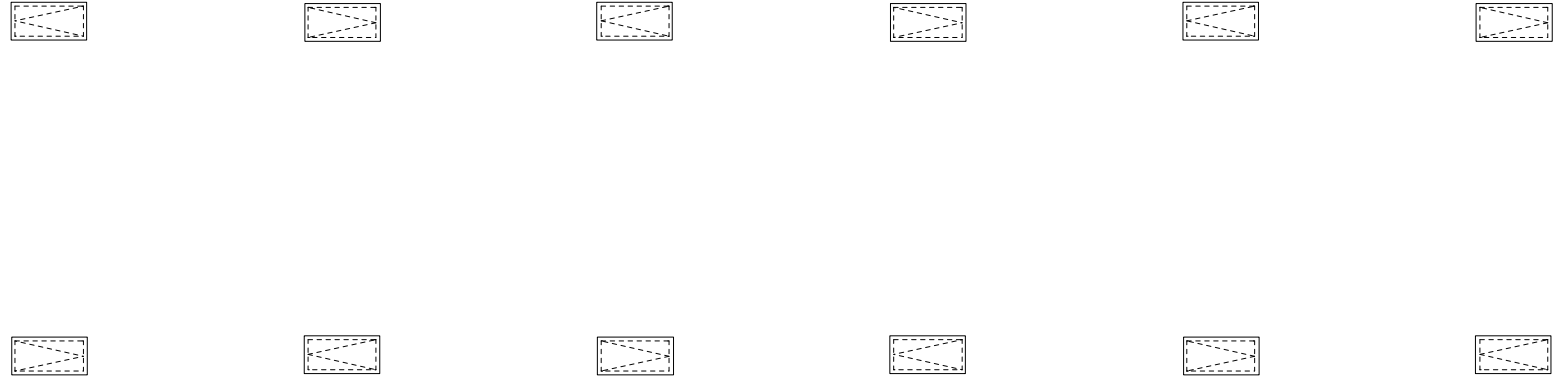
Grossmatte 1, 6260 Reiden
Tel. 062 749 00 60 Fax

Massstab
1:200
Grosse
A3

Gez.
mm
Datum
04.04.18

Objekt Nr.
649
Plan Nr.
P 103

Neubau Schulhaus Reiden Mitte
Projekt
Grundriss Obergeschoss +2



Gemeinde Reiden, Gemeindeverwaltung

Grossmatte 1, 6260 Reiden
Tel. 062 749 00 60 Fax

Massstab

1:200

Groesse

A3

Gez.

mm

Datum

04.04.18

Objekt Nr.

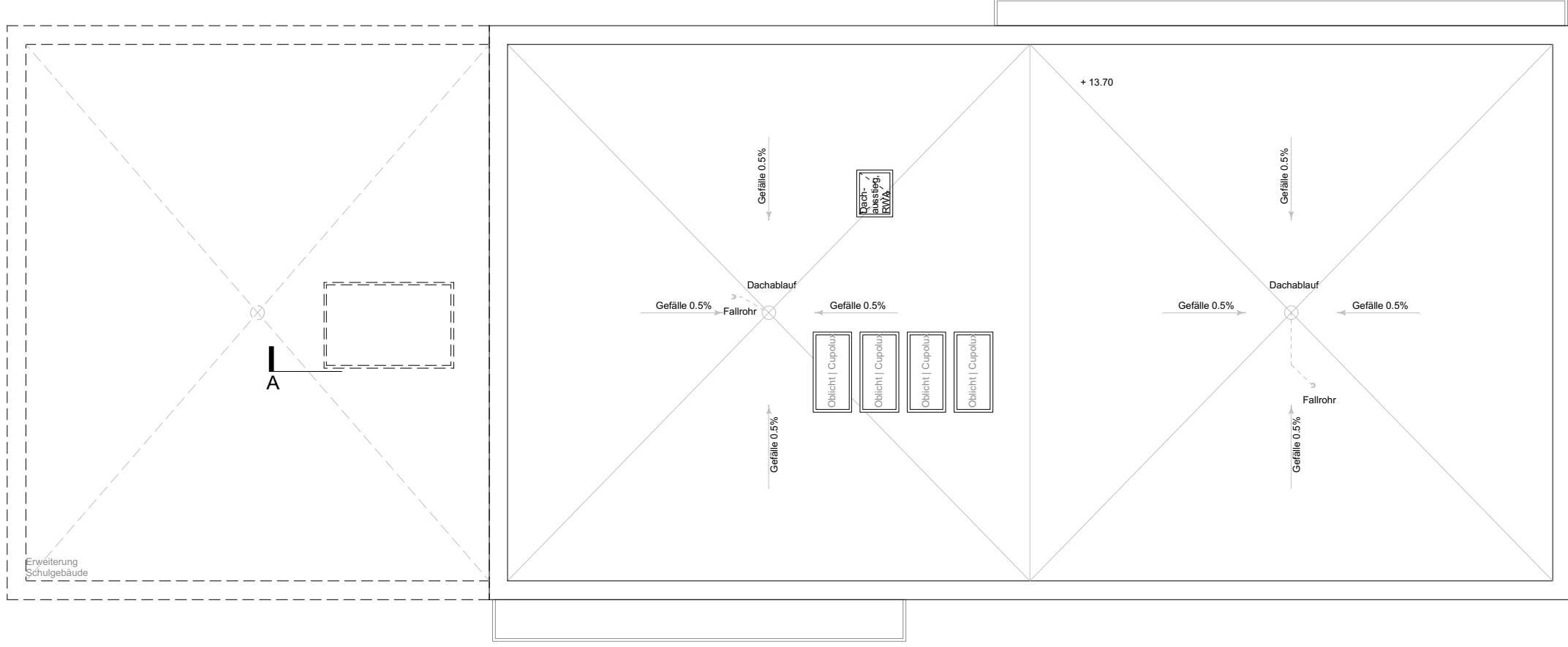
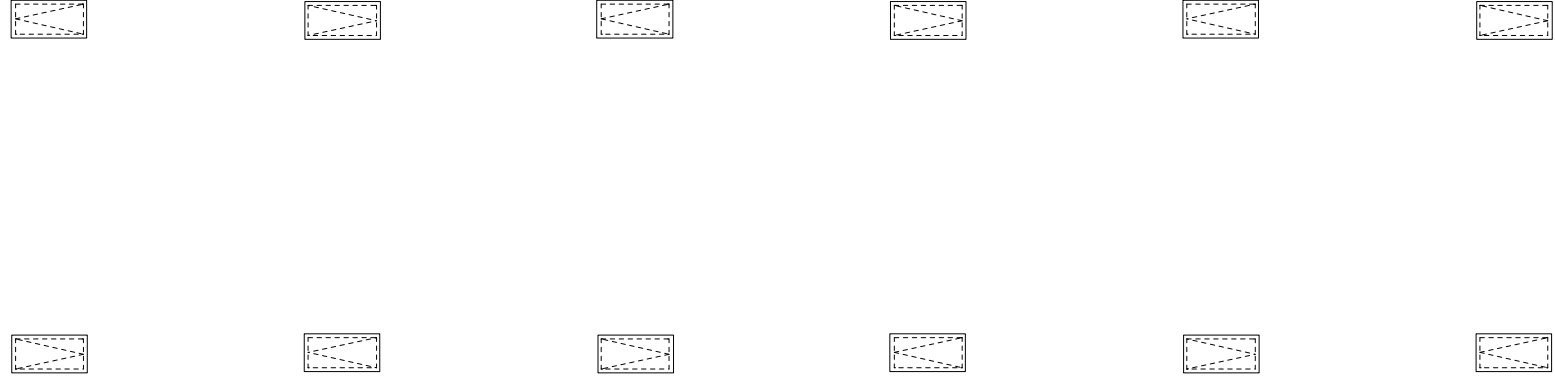
649

Plan Nr.

P 104

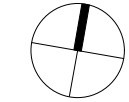
Neubau Schulhaus Reiden Mitte
Projekt

Grundriss Obergeschoss +3



A

B



A

B

Neubau Schulhaus Reiden Mitte
Projekt

Gemeinde Reiden, Gemeindeverwaltung

Grossmatte 1, 6260 Reiden
Tel. 062 749 00 60 Fax

Massstab
1:200
Grosse
A3

Gez.
mm
Datum
04.04.18

Objekt Nr.
649
Plan Nr.
P 105

Dachaufsicht

